

Quick Set-Up & Disassembly



For support contact: support@parmed.com.au

We advise that the CoverCool (CuddleBlanket™) will work most effectively if used 3 hours after the person has died.

Set-up:

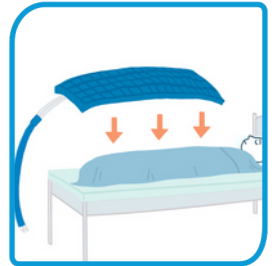
1. Ensure the unit is OFF using the on/off switch. Plug the power cord into mains and ensure the unit is well ventilated with 30cm/12" of flow space around the unit.
2. Insert the hose connectors into the machine. Listen for the click.
3. Lay a sheet on the person laying on the bed.
4. Add the cooling pad on top of the person and bring up to shoulder height.
5. Place another sheet on top of the cooling pad and bring up to shoulder height.
6. Add the insulated blanket and tuck in around the person. A sheet or blanket can be added on top, or it can be inserted inside a duvet cover.
7. Switch the CuddleBlanket ON using the on/off rocker switch. Note: to prevent pump damage, do not turn the unit on without filling with fluid first.

If this is the units first use, remove the filler cap and slowly fill the unit with distilled water and a water purification tablet. Be careful not to overfill the unit. Pour until fluid reaches 2.5cm/1" below the filler neck. If the alarm sounds, you may need to top up with additional distilled water.

8. Select the desired set point (40°F or 46°F) with the single rocker switch. The 46°F option can be used to minimise and slow the forming of condensation on the cooling pad in higher ambient and humid conditions. E.g. in a warm room with windows closed.



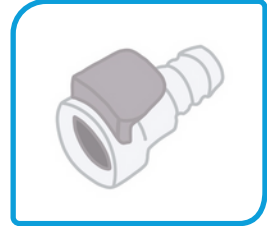
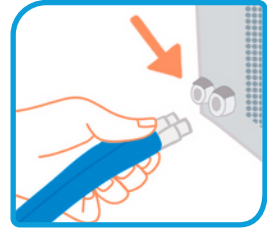
Set up, dismantle videos



Disassembly:

1. Turn the unit off and unplug from the mains power.
2. Release the hose by pressing the connector release buttons. A few drops of fluid may be lost, this is normal.
3. Wipe surfaces with a plastic safe sanitiser wipe. Do not use bleach.
4. Return the CuddleBlanket system to its storage box for later use. **IMPORTANT:** It is recommended that the pad reaches room temperature before being stored to improve longevity.

Note: Distilled water with water purification tablets can be left for approximately 6 months between draining and refilling. Refer to manual for more information or contact info@flexmort.com



CuddleBlanket pad
drain coupling

Troubleshooting:

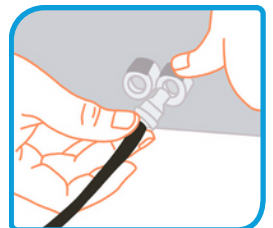
If there is an issue the unit will alarm, this can be because of low fluid flow. There are three things you can do to resolve this issue:

1. Leaving the unit switched on, check the coolant level, and top up the unit if necessary. Use only distilled water, to ensure maximum cooling efficiency and prevent damage to the unit. The chiller unit's capacity is approximately 9floz/250ml.
2. Check the hose for splits or kinks. 3. Check the pad for tears. If the unit is still alarming, follow these steps:
 - Plug the black loop back hose supplied into the unit.
 - If the alarm stops, recheck the coolant level, hose, and pad.

If the alarm continues, please contact our servicing team.



Troubleshooting
videos



CuddleBlanket black
loop back hose

THIS IS NOT A MEDICAL DEVICE
For model version FCBI50-DH3 August 2024

Shotton Parmed

139 - 145 Greens Rd, Dandenong
South Victoria, Australia 3175

Simone Shotton
Sales Manager

0408 316 477

simone@parmed.com.au

(03) 8725 1000

www.parmed.com.au

sales@parmed.com.au

